

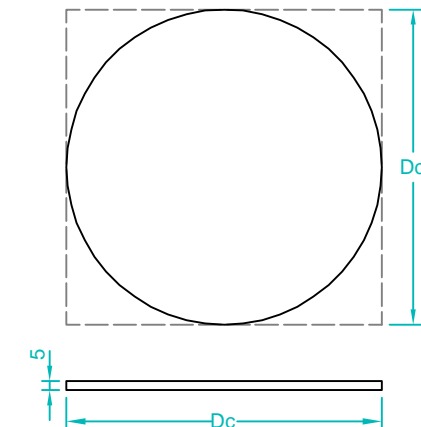
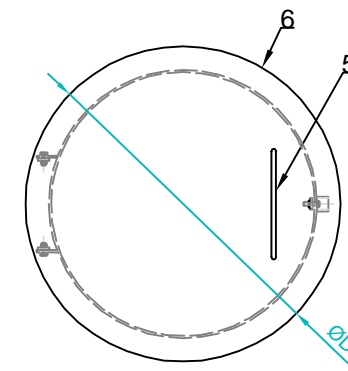
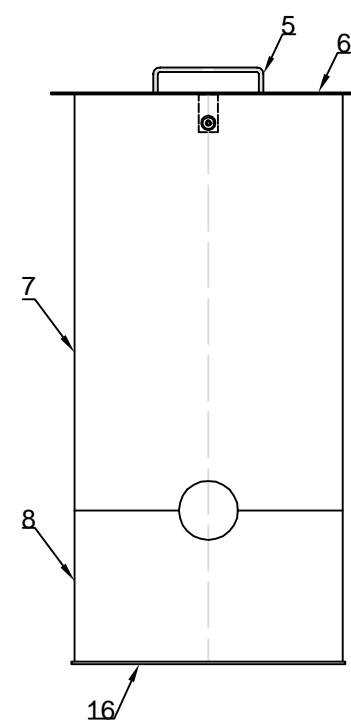
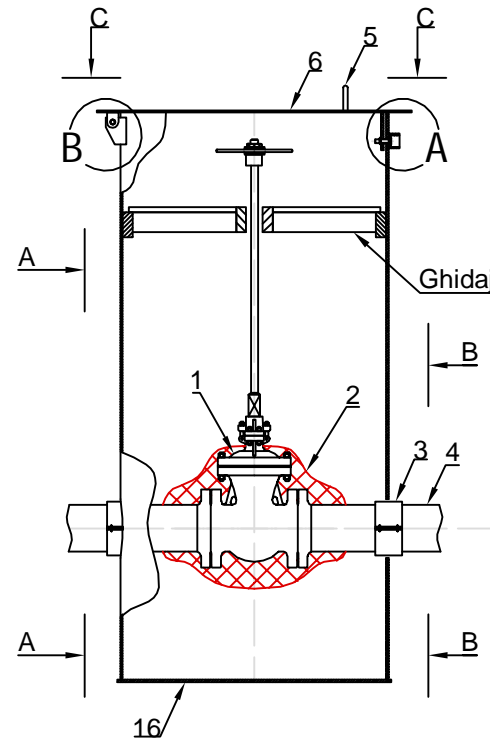
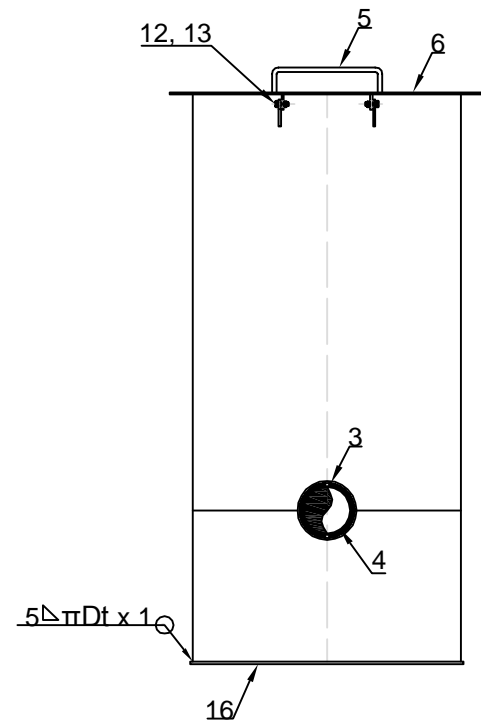
Vedere A - A

Detaliu izolare ventil si montaj tub protector

Vedere B - B

Vedere in plan C - C

Detaliu "6"

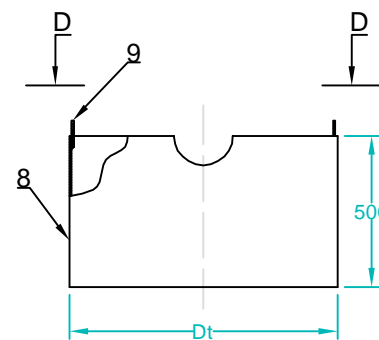
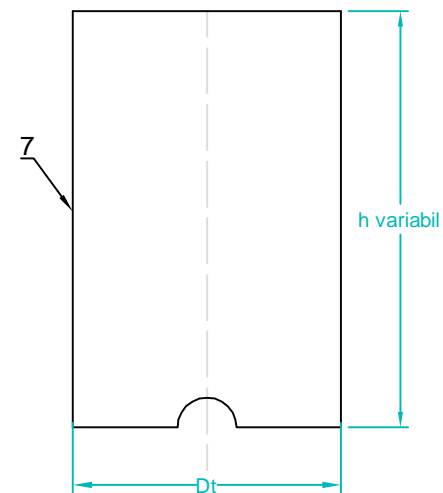


Detaliu tub superior "7"

Detaliu tub inferior "8"

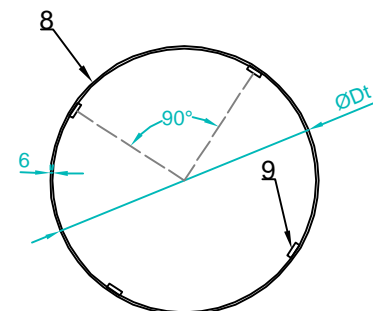
Dimensiuni tub protector				
DN ventil	Dt	Grosime tub [mm]	Dc	Df
600	1626	7.1	1700	1700

Poz.	Denumire	Dimensiuni	STAS	Material	Cantitati
1	Robinet cu sertar pana	DN 600		A216 + 13Cr	
2	Mastic izolator		KEBU PLAST MASTIC		
3	Inel distantier			MDPE	2
4	Teava		SR EN ISO 3183/2013	L 360N	
5	Maner	Ø12 x 400mm	SR EN 10060:2004	OL 37.2K	1
6	Capac	Tb. 5mm	SR EN 10029:2011	OL 37.2K	1
7	Manta camin superioara	ØDt x 7.1	SR EN ISO 3183/2013	L 245N	
8	Manta camin inferioara	ØDt x 7.1 x 500mm	SR EN ISO 3183/2013	L 245N	
9	Platbanda ghidare tub	100 x 40 x 5mm	SR EN 10058:2004	OL 37.2K	4
10	Protector surub	Ø1 1/2" x 3.6 x 30mm	STAS 8185:88	OLT 45	1
11	Tabla groasa	100 x 50 x 6mm	SR EN 10058:2004	OL 37.2K	1
12	Surub	M10 x 50	SR EN ISO 4018:2011		3
13	Piulita	M10	SR EN ISO 4034:2013		3
14	Tabla groasa	70 x 55 x 6mm	SR EN 10058:2004	OL 37.2K	2
15	Tabla groasa	40 x 30 x 6mm	SR EN 10058:2004	OL 37.2K	2
16	Fund camin	Tb. 5mm	SR EN 10029:2011	OL 37.2K	1

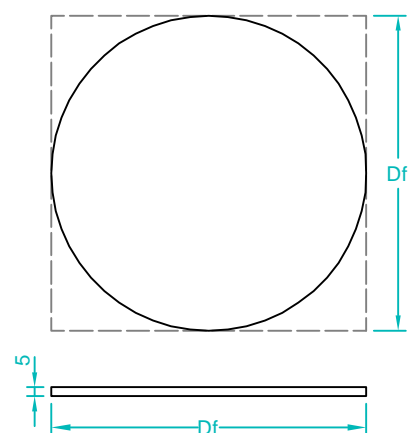


NOTA:
 Protectia anticoroziva a caminului se va face prin vopsire conform SR EN ISO 12944:2002
 - doua straturi grund epoxidic cu Zn, cu grosime totala strat uscat 75 - 80 µm;
 - vopsea epoxidica clorcauciuc in doua straturi.

Vedere D - D



Detaliu "16"



GREUTATE CAMIN IN FUNCTIE DE INALTIME

Greutate capac camin [Kg]	113.5	113.5	113.5	113.5	113.5	113.5	113.5	113.5	113.5	113.5
Greutate fund camin [Kg]	113.5	113.5	113.5	113.5	113.5	113.5	113.5	113.5	113.5	113.5
Greutate tub pe ml [Kg]	283.0	283.0	283.0	283.0	283.0	283.0	283.0	283.0	283.0	283.0
H [m]	1.50	2.00	2.50	3.00	3.50	4.00	4.50	5.00	5.50	6.00
Greutate [Kg]	662.50	804.00	945.50	1087.00	1228.50	1370.00	1511.50	1653.00	1794.50	1936.00

Verificator/
Expert

Nume

Semnatura

Cerinta

Referat / Expertiza Nr. / Data

S.C. SNIF PROIECT S.A. Targoviste
 Numar de inmatriculare J15/925/2005

Beneficiar:
 CONPET S.A. PLOIESTI

Pr. nr.
 343/2017

Specificatie

Nume

Semnatura

Scara:

"Inlocuire conducta titei Ø 24" Constanta - Midia, in zona Pod
 Navodari - inceput traseu aerian in lungime de 405m "

Faza
 PT+CS+DE

Desenat

Ing. Radu Florin

Data:
2017

Detaliu izolare ventil si montaj tub
 protector

Pl. nr.
 16

Proiectat

Ing. Costea Paul